



Loyola  
Marymount  
University

Los Angeles



LMU

**President's  
Convocation**

Tuesday, November 12  
11:30 a.m.  
Drullinger Family Stage  
Lawton Plaza

FORWARD

FORWARD



# TRANSFER GUIDE

Fall 2025–Spring 2026



# TRANSFER ADMISSION AND ENROLLMENT SERVICES AT LMU

More than 600 students transfer to Loyola Marymount University every year from community colleges and other four-year institutions. Our network of support services is designed to make the transition as easy as possible so that students can continue their studies and take advantage of the valuable resources that LMU offers. With a global education in a personalized learning environment, a variety of attractive financial aid opportunities, and one of the most beautiful campuses in the country, LMU is the ideal place to advance your education.





## APPLICATION DEADLINES

**Spring Early Priority:** October 1

**Fall Early Priority:** February 1

## PREPARE TO APPLY

- Minimum cumulative GPA **requirement** for all majors: 3.0
- Average incoming GPA of transfer students: 3.5
- There is no minimum number of units needed to be eligible to apply
- Students are expected to be enrolled full-time; at least 12 units per semester
- Completion of a combination of major specific courses and core curriculum to meet full-time unit recommendation
- These are academic recommendations rather than admission requirements

## Special Programs

### Transfer Guarantee

This program provides guaranteed admission for transfer students from specific community colleges in California and Arizona. Students are eligible to apply for the guarantee under all majors from the Bellarmine College of Liberal Arts, College of Communication and Fine Arts, College of Business Administration, or Frank R. Seaver College of Science and Engineering.

➔ [transfer.lmu.edu/transferguarantee](https://transfer.lmu.edu/transferguarantee)

### LMU-WLA Scholars Program

This program is designed for students at West Los Angeles College (WLAC) wanting to pursue a bachelor's degree in Business or Psychology. Students are guaranteed admission after meeting program requirements and completing an Associate in Science for Transfer (AS-T) in Business Administration or Associate in Arts for Transfer (AS-T) in Psychology from WLAC. Through this program students have access to LMU resources including specialized academic counseling, facilities, and Career Professional Development services and opportunities.

➔ [transfer.lmu.edu/wlacscholars](https://transfer.lmu.edu/wlacscholars)



# UNDERGRADUATE PROGRAMS

Undergraduate programs allow students to double major and minor in several areas of study to create a more focused and purposeful learning environment.

**\* = students may major or minor in these programs**

## Business

### MAJORS

Accounting, BS \*

Entrepreneurship, BBA

Finance, BBA

Information Systems and Business Analytics, BBA, BS

Management and Leadership, BBA

Marketing, BBA

### MINORS

Business Administration

Business Law

International Business

---

## Communication and Fine Arts

### MAJORS

Art History, BA \*

Communication Studies, BA

Dance, BA \*

Music, BA \*

Studio Arts, BA (General Degree) \*

Studio Arts, BFA (Specialized Degree)  
Concentration: 3D Studies, Art Education,  
Drawing, Multimedia Arts, Painting,  
Photography, Visual Communication Design

Theatre Arts, BA \*

### MINORS

Public Relations

---

## Engineering, Math, and Science

### MAJORS

Applied Mathematics, BS \*

Applied Physics, BS

Biochemistry, BS \*

Biology, BA, BS \*

Chemistry, BS \*

Computer Science, BS \*

Engineering: Civil, BSE

Engineering: Computer, BSE

Engineering: Electrical, BSE \*

Engineering: Mechanical, BSE

Environmental Science, BS \*

Health and Human Sciences, BS

Mathematics, BA, BS \*

Physics, BS \*

Statistics and Data Science, BS \*

### MINORS

Interactive, Gaming, and Immersive Media

---

## Education

### MAJORS

Education and Learning Sciences (Liberal Studies), BA

### PROGRAMS

Bilingual Education

Elementary Education

Secondary Education

Special Education



# Film and Television

## MAJORS

Animation, BA \*

Film, Television, and Media Studies, BA \*

Film and Television Production, BA

Recording Arts, BA

Screenwriting, BA \*

## MINORS

Interactive, Gaming, and Immersive Media

International Documentary Production

# Liberal Arts

## MAJORS

African American Studies, BA \*

Asian and Pacific Studies, BA \*

Chicana/o and Latina/o  
Studies, BA \*

Classics and Archaeology, BA \*

Economics, BA, BS \*

English, BA \*

Environmental Studies, BA \*

French, BA \*

History, BA \*

International Relations, BA \*

Journalism, BA \*

Modern Languages, BA

Philosophy, BA \*

Philosophy, Political Science,  
and Economics, BA

Political Science, BA \*

Psychology, BA \*

Sociology, BA \*

Spanish, BA \*

Theological Studies, BA \*

Urban Studies, BA \*

Women's and Gender Studies, BA \*

## MINORS

Asian Pacific American Studies

Bioethics

Catholic Studies

Chinese

German

Global Economics

Health and Society

Irish Studies

Italian

Jewish Studies

Modern Greek Studies

Peace and Justice Studies

## Pre-Professional Programs

Education

Pre-Dentistry

Pre-Health

Pre-Law

Pre-Medicine

Pre-Occupational Therapy

Pre-Optometry

Pre-Pharmacy

Pre-Physical Therapy

Pre-Podiatric Medicine

Pre-Veterinary Medicine

**Accelerated Master's Programs** allow students to get a head start on earning a master's degree. Students admitted into an Accelerated Master's Program immediately enroll in a master's degree program on a full-time basis after their senior year.

Scan the QR code for more information, or visit  
[admission.lmu.edu/fourplusone](https://admission.lmu.edu/fourplusone).



# COURSE RECOMMENDATIONS FOR COMPETITIVE PROGRAMS

## **Bellarmino College of Liberal Arts**

### **Psychology**

- General Psychology
- Statistics for Psychology
- Brain and Behavior
- Research Methods

### **Economics**

- Statistics
- Calculus 1
- Microeconomics
- Macroeconomics

### **Political Science**

- U.S. Politics
- Comparative Politics
- International Relations
- Foundations of Political Theory
- Empirical Approaches

### **International Relations**

- Comparative Politics
- International Relations
- Empirical Approaches
- Foundations of Political Theory
- Foreign Language I
- Introductory Economics

## **College of Communication and Fine Arts**

### **Communication Studies**

- Small Group/Interpersonal Discussion
- Speech/Public Speaking
- Communication Studies
- Argumentation and Debate

## **College of Business Administration**

### **All Majors**

- **Business Calculus or Calculus 1 completed with B grade or higher (required)**

- Business Law
- Financial/Managerial Accounting
- Microeconomics
- Macroeconomics
- Statistics

Don't see your major? Refer to the recommended courses for all majors.

➔ [transfer.lmu.edu/recommendedcourses](https://transfer.lmu.edu/recommendedcourses)

To get a sense of what will transfer, please refer to our Transfer Agreements.

➔ [registrar.lmu.edu/transferenceagreements](https://registrar.lmu.edu/transferenceagreements)



# HOW TO APPLY

Your application and official transcripts must be submitted by the application deadlines to ensure full consideration for all programs. Without these required materials, an application is not considered complete and cannot be reviewed. Applications for admission are reviewed on a rolling basis as they become complete.

## **Students with 30 or More Transferable Semester Units Completed**

- 1) Common Application or the LMU Online Application
- 2) Official Transcripts from ALL Colleges Attended
- 3) Official AP Scores (if any)

## **Students with Fewer than 30 Transferable Semester Units Completed**

- 1) LMU Online Application or the Common Application
- 2) Official Transcripts from ALL Colleges Attended
- 3) Official High School Transcripts
- 4) Official AP Scores (if any)

**Note:** Students who, for academic reasons, were not eligible for admission as LMU first-year students at the time of their graduation from high school must complete at least 30 semester hours of transferable college work to be considered for transfer admission.

## **Supplemental Items (optional)**

- Letters of Recommendation
- Mid-Term Report

## **How to Submit Official Transcripts**

- Official transcripts must be submitted from each college you have attended—transcripts are considered official when they are sealed and sent directly from the institution
- To request official transcripts, contact the registrar of the institutions you will be requesting from
- Electronic submission of official transcripts to [transfer@lmu.edu](mailto:transfer@lmu.edu) can expedite the submission process

Please mail official transcripts to:

Undergraduate Admission 1 LMU Drive, VDA 100 Los Angeles, CA 90045

## **Additional Requirements for International Transfer Students**

### **English Proficiency Requirements (choose one from the below options)**

- Complete English Composition at a United States college or university in class with a minimum grade of C or better
- Proficiency Exams (select one from the following):
  - a. Test of English as a Foreign Language (TOEFL)—90 for the internet-based TOEFL (the equivalent score of 577 on the paper-based TOEFL)
  - b. International English Language Testing System (IELTS) minimum standard score is 6.5
  - c. Pearson Test of English Academic (PTE) minimum standard score is 56



## LMU CORE CURRICULUM

The University Core Curriculum provides a shared intellectual foundation for every undergraduate student at LMU, and fosters a love of learning that students can carry into their future lives.

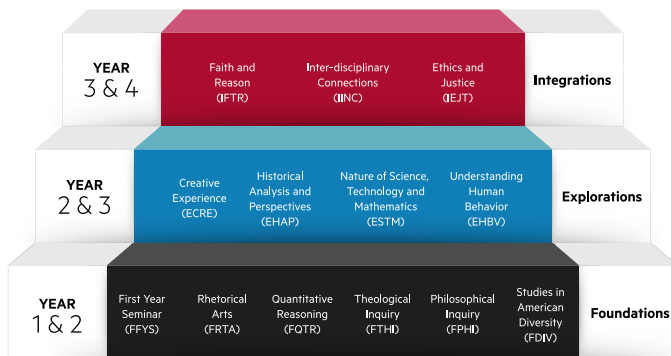
Transfer students who enter with 31 units or more may choose to waive either the First Year Seminar (FFYS) or Rhetorical Arts (FTRA) requirement. Students transferring with fifty-five (55) or more units are exempted from the following core requirements: Foundations–Theological Inquiry (FTHI), Foundations–Philosophical Inquiry (FPHI).

### Structure of the LMU Core Curriculum

Courses taken at other academic institutions may fulfill University core requirements, Program (academic major/minor) requirement or transfer in as electives. LMU has established articulation agreements with many community colleges.

To learn how courses transfer from Transfer Agreement partner colleges, visit:

» [registrar.lmu.edu/transferagreements](https://registrar.lmu.edu/transferagreements)







## FINANCIAL AID

### Free Application for Federal Student Aid (FAFSA)

February 1 is the deadline for transfer applicants to submit the FAFSA. Students can submit their FAFSA anytime prior to applying for admission.

➔ [financialaid.lmu.edu](https://financialaid.lmu.edu)

### California Dream Act

The California Dream Act allows students who meet the AB540 criteria to apply for state aid as well as be considered for institutional aid. The application deadline for California Dream Act is March 2.

### Merit Scholarships

LMU offers several academic scholarship programs to recognize and reward the academic accomplishments of our most distinguished entering transfer students. No special application is required for these scholarships. All applicants for admission are automatically considered. Selection is based on academic accomplishment, including GPA.

- Transfer Scholarship: \$2,000–\$10,000
- Phi Theta Kappa Scholarship: \$2,000 annually

## ADDITIONAL SCHOLARSHIP OPPORTUNITIES

### Yellow Ribbon Program

The Yellow Ribbon GI Education Enhancement Program (Yellow Ribbon Program) is a provision of the Post-9/11 Veterans Educational Assistance Act of 2008. This program allows degree granting institutions, such as LMU, to voluntarily enter into an agreement with the Veterans Administration (VA) that states the school may contribute up to 50 percent of tuition expenses, and the VA will match that amount.

# Life at LMU

## FOR TRANSFER STUDENTS



### PTK NATIONAL TRANSFER HONOR ROLL, 2025

Phi Theta Kappa Honor Society (PTK) has named LMU to its Transfer Honor Roll in recognition of the dynamic pathways we have created to support transfer students.



### TAU SIGMA HONOR SOCIETY

A national honor society exclusively for transfer students. The mission is to recognize and promote the academic excellence and involvement of transfer students. Tau Sigma provides its members opportunities to earn scholarships, attend leadership conferences, and develop friendships all while becoming an integral part of the LMU community.





## TRANSFER PROGRAMS

The Transfer Programs office provides programming, services, and resources dedicated to serving students during their transition to campus. Programming examples include monthly dinners and other social opportunities.



## VETERAN PROGRAMS

LMU's Veteran Programs office supports the transition, retention and graduation of student veterans, reservists, and veteran dependents by providing individualized services, programming and resources.

For more information on Veteran and Military Education Benefits scan the QR code or visit:

» [transfer.lmu.edu/veteranbenefits](https://transfer.lmu.edu/veteranbenefits)



## TRANSFER LIVING LEARNING COMMUNITY (LLC)

An intentional year-long program that helps new students transition successfully into the LMU environment. In this living community, transfer students will be able to participate in collaborative programming specifically for transfer students living on campus. Joining the transfer community LLC helps students integrate into the leadership culture of LMU.

## ATLAS PROGRAM (ACCELERATING TRANSFER AND LOW-INCOME ACCESS AND SUCCESS)

The ATLAS team provides holistic support to enhance the academic experience of students transferring to LMU, guiding them throughout their educational journey.

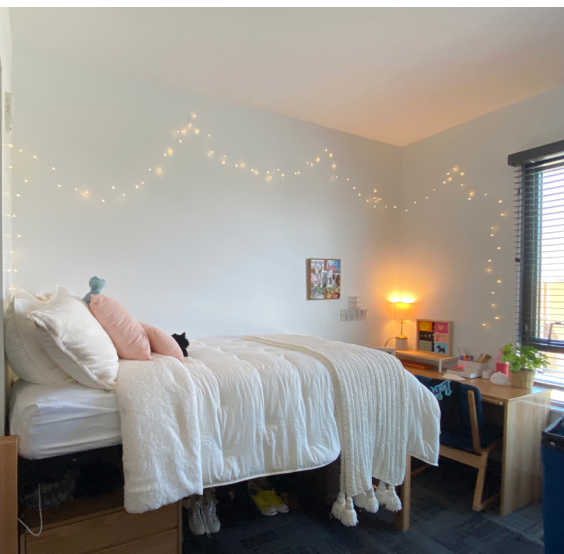
Funded by the U.S. Department of Education, ATLAS is committed to closing equity gaps in access and timely degree completion for low-income and transfer students.





## STUDENT LIFE

LMU students come from every corner of the globe, united by their shared ambition to become respected as leaders in their chosen fields. With **over 200 student organizations** to choose from, they are also known for their engagement in campus life as athletes, dancers, entrepreneurs, filmmakers, researchers, singers, writers, activists, volunteers, and so much more.



## RESIDENCE HALLS WITH A VIEW

LMU Student Housing has many residential living options: traditional residence halls, suites, apartments and houses are home to over 3,000 students who live on campus.

**For more information:**

» [admission.lmu.edu/housing](https://admission.lmu.edu/housing)



## ATHLETICS

Home to 14 NCAA Division I sports teams, LMU Athletics seeks to foster an environment for student-athletes to develop confidence and leadership skills, on and off the field. There are also a variety of competitive and recreational club and intramural sports to participate in while at LMU.



# APPLICATION CHECKLIST

- ☒ Review the LMU Transfer Guide
- ☐ Visit the Transfer Admission website at [transfer.lmu.edu](https://transfer.lmu.edu) for more information
- ☐ Submit the FAFSA before the February 1 deadline
- ☐ Submit your admission application
- ☐ Arrange for your official transcripts to be sent prior to the application deadline  
This process typically takes two or three weeks, so request transcripts well in advance
- ☐ Submit high school transcripts  
If you have not yet completed 30 units at a college or university
- ☐ Access the LMU applicant status page to confirm submitted materials are complete. The link to the page is provided to you by email.





# LMU FACTS & FIGURES



**Top 25**  
**Most Beautiful**  
**Campus**  
Princeton Review, 2025



**Top 20**  
**Best College Library**  
Princeton Review, 2025

**20**  
Average Class Size



**Top 25**  
**Green Honor Roll**  
Princeton Review, 2025



**For more information on Study Abroad:**  
» [academics.lmu.edu/studyabroad](https://academics.lmu.edu/studyabroad)



## Best Value College

*Based on academic rigor,  
affordability, and career outcomes  
for graduates, among others.*

**Princeton Review, 2025**

# 11:1

Student  
to Faculty  
Ratio

# 3,200

**Internships  
Available**

# 100+

**study abroad and  
service abroad  
opportunities**

# 98%

**of graduates from the class  
of 2024 had positive  
outcomes within 6 months  
(i.e. job, graduate school, or one year  
of service)**



**For more information on Outcomes**  
» [outcomes.lmu.edu](https://outcomes.lmu.edu)



## Loyola Marymount University Transfer Admission and Enrollment Services

1 LMU Drive, Suite 150  
Los Angeles, CA 90045

[transfer@lmu.edu](mailto:transfer@lmu.edu)  
310.338.5913

### Transfer Information

#### Sessions and Tours:

Information sessions and tours catered to prospective transfer students.

➔ [transfer.lmu.edu/visit](https://transfer.lmu.edu/visit)

### Follow us on social media:



[@LMUadmission](https://www.instagram.com/LMUadmission)

LMU embraces a community where people of all backgrounds are respected and valued, remaining committed to maintaining an environment free from discrimination and harassment as defined by federal, state, and local law. See our Statement of Non-Discrimination and related grievance procedures at [resources.lmu.edu/titleix/policies](https://resources.lmu.edu/titleix/policies). LMU does not discriminate on the basis of sex in any education program or activity that it operates. To report questions or concerns about sex-based discrimination, please find the contact information for our Title IX Coordinator at [resources.lmu.edu/titleix](https://resources.lmu.edu/titleix).

© 2025 Loyola Marymount University